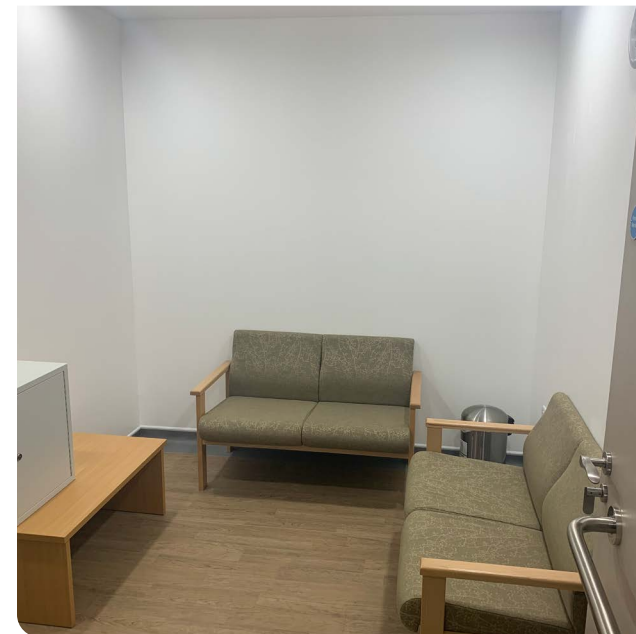




We've recently finished this great project for a private hospital in Hemel Hempstead. Our scope of works included the redesign of an existing office space, and creation of an extra MRI suite. We also repurposed the adjacent ward bedroom and ensuite to allow space for the new Tech Room, which houses all the necessary services required to support the MRI. Various elements of the project consisted of CDP packages that included the design and install of the necessary steel shielding, RF cage and the quench pipe. Well done to everyone involved on delivering this great project!



GET IN TOUCH →

Safety Spotlight...



Stress & Mental Wellbeing

Did you know stress, depression and anxiety are responsible for almost half of work-related illness reports? According to the HSE, 2020-2021 statistics:

1.7 MILLION
workers suffered from a
work-related illness,
822,000
of those, were down to
stress, depression or anxiety.

Earlier this month it was International Stress Awareness Week and as part of our commitment at Highline to our staff, we're taking the 5 steps approach detailed in the Working Minds campaign.



Q&A with...



Des & Darren on their recent project completion at Hemel Hempstead (see across)



Des Baker
Project Manager



Darren Warby
Project Manager

Q: What three things were most important on this project?

Des:

- Ensuring that the MRI delivery and install went to plan as we required the use of the neighbouring business to allow us to site a crane for the off-load.

Darren:

- Delivery of the project in the time scale ensuring the client's needs have been met.
- Quality of work throughout the project ensuring the client has the best quality finished project.
- Maintaining good communications with the client and building a good relationship throughout the project.

Q: Sum up the project experience in three words...

Des:

- Challenging, Different, Satisfaction

Darren:

- Interesting, knowledge, experience